

# TORQUE WRENCHES

EN



The Right Torque is Just One Click Away

2024

**NovaTork®**

# NovaTork®

## THE RIGHT TORQUE IS JUST ONE CLICK AWAY

The correct use of a torque wrench ensures that a bolted connection does not loosen or break in practice. This prevents damage to machines or loss of parts. NovaTork develops and produces a wide range of torque wrenches that help you ensure your productivity and quality. The torque wrenches are easy and precise to adjust.



### CLICK TORQUE WRENCHES / ASSEMBLY WRENCHES

For torque application when assembling bolts. Equipped with fixed ratchet head or as an insert spanner for optimum flexibility. Also available in screwdriver version.



### DIGITAL ASSEMBLY WRENCHES

The assembly wrenches are digitally adjustable by torque or by both torque and angular rotation. This ensures that the bolted connection is tightened correctly.



### DIAL TORQUE WRENCHES

Regularly, you will need to check your finished product or adjust machines. To do this, you use a measuring torque wrench that indicates how much torque a bolt is mounted with.



### PRE-SET ASSEMBLY WRENCHES

Industrial pre-set torque wrenches are set to a predetermined torque. The operator cannot change it, so the torque is guaranteed to remain as you have set it.



### INSERT TOOLS

In addition we offer a variety of insert tools, for example with square drive open end, in angle or with ratchet head for rectangular shank head torque wrenches.

# NovaTork®

## DIGITAL TORQUE SCREWDRIVER ES-SERIES

0,2 ~ 6 Nm

NovaTork supplies a complete range of manual torque wrenches for the assembly industry. The ESM series includes 4 models of digital torque wrenches in a torque range of 0.2-6Nm. The built-in transducer ensures a high accuracy of +/- 2%.

The desired torque value can be set easily and accurately. The display shows the peak value per joint and then automatically zeroes out, allowing uninterrupted work. After 3 minutes, the display switches off automatically. An OK/NOK and battery-low signal is given with acoustic and optical signals.



### ESM Model

Type	Hexagon	Torque Nm	Weight kg	Width mm	Length mm
ESM1100	1/4"	0,2 ~ 1	0,23	40	210
ESM1250	1/4"	0,5 ~ 2,5	0,23	40	210
ESM1360	1/4"	0,6 ~ 3,6	0,23	40	210
ESM1600	1/4"	1 ~ 6	0,23	40	210

### FEATURES

- Accuracy:  $\pm 2\%$
- Torque units: Lb.in, cNm, Kg.cm.
- Target torque can be easily set on the LCD display.
- LED light and buzzer alarming.
- Backlight can be turned on, good for dark condition.
- Peak value hold function.
- Automatic zero clearing when used continuously.
- Battery level display.
- Handgrip in engineering plastic, oil resistant and non-slip resistant, durable.
- The built-in lithium battery can be charged by the dedicated charging adapter.
- Automatically shuts off after 3 minutes of non use.

# NovaTork®

## MECHANICAL TORQUE SCREWDRIVER

### MS-SERIES

### 0,2 ~ 6 Nm

NovaTork's torque screwdrivers are used wherever small torques are required, such as in panel building, electrical equipment construction or plant engineering.

The torque can be easily adjusted and is very clearly readable on the decimalised scale. The ergonomically shaped handle ensures a pleasant and good grip.

#### FEATURES

- Accuracy:  $\pm 6\%$ , which conforms to the ASME B107.14 standard.
- 1/4" hexagon socket with a quick-release design, convenient for changing various bits.
- Reliable locking mechanism, light operation.
- Clearer scale, accurate increment.
- Ergonomic handle, double color with soft and hard adhesive, comfortable grip.
- Handgrip in engineering plastic, oil resistant and non-slip resistant, durable.



#### MSM Model

Type	Hexagon	Torque Nm	Weight kg	Width mm	Length mm
<b>MSM1100</b>	1/4"	0,2 ~ 1	0,26	38	172
<b>MSM1250</b>	1/4"	0,5 ~ 2,5	0,26	38	172
<b>MSM1360</b>	1/4"	0,6 ~ 3,6	0,26	38	172
<b>MSM16</b>	1/4"	1 ~ 6	0,26	38	172





# NovaTork®

## BREAKER TORQUE WRENCH

### BWM-SERIES

### 0,2 ~ 10 Nm

NovaTork BWM series of torque wrenches are developed for low torque level applications. The breaker design allows the user to apply full torque carefully. Additionally, the fact that the torque level was reached will be clearly sensed, visible and audible by the 15° off-set.

#### FEATURES

- Accuracy:  $\pm 6\%$  from 20-100% of capacity.
- Alloy one-piece structure, good looking.
- Special break design, avoid the situation that the sound of Click wrench is not heard.
- Special adjusting tool and locking for reliable work.
- Interchangeable head for various applications.



#### BWM Model

Type	Torque Nm	Weight kg	Width mm	Length mm
<b>BWM2</b>	0,2 ~ 2,0	0,07	18	130
<b>BWM5</b>	0,5 ~ 5,0	0,08	18	148
<b>BWM10</b>	1,0 ~ 10,0	0,09	18	148

Remarks: Sizes and weight do not include the inserts.



#### Matching insert for BIT's

Inserts: **BIT08**(1/4"), **BIT10**(5/16")

#### Matching open end insert

Type	A/F mm	Length mm	Width mm	Thickness mm	Weight kg
<b>OB05</b>	5	31,5	12,7	2	0,012
<b>OB05.5</b>	5,5	31,8	12,7	2,5	0,015
<b>OB06</b>	6	32	15,3	3	0,02
<b>OB07</b>	7	32,5	15,7	3	0,02
<b>OB08</b>	8	32,8	16,3	5	0,021
<b>OB10</b>	10	34	18,7	6	0,023
<b>OB13</b>	13	35	25	6	0,03
<b>OB16</b>	16	39,3	27,4	6	0,032
<b>OB17</b>	17	41	29	6	0,032

# NovaTork®

## SLIPPER TORQUE WRENCH

### SL-SERIES

### 1 ~ 100 Nm

Pre-set torque spanners from NovaTork are designed for the assembly industry. Here, the operator can work with a preset torque and must not change it. This prevents unintentional setting errors.

The special feature of the SL series is that when the pre-set torque value is reached, it slips and does not cause an overload.

#### FEATURES

- Accuracy:  $\pm 6\%$  from 20% to 100% of capacity.
- The head part is made of aviation aluminum, the pipe is made of alloy steel, strong and durable.
- SL torque wrench is a preset torque wrench, set the torque value with special tools before use.
- The torque cannot be changed arbitrarily during use, which guarantees the working quality.
- When the preset torque value is reached, it will slip and will not cause overload.
- The ingenious ratchet function makes it easy to tighten clockwise, even in a narrow space.
- Comfortable TPR handle for long time working, suitable for assembly line and production line.



#### SL Model

Type	Square Drive	Torque Nm	Weight kg	Width mm	Length mm
<b>SL16</b>	1/4"	1 ~ 6	0,41	31	200
<b>SL125</b>	1/4"	3 ~ 25	0,51	38	220
<b>SL260</b>	3/8"	10 ~ 60	0,82	46	330
<b>SL3100</b>	1/2"	20 ~ 100	1,06	46	460

# NovaTork®

## ADJUSTABLE SPANNER HEAD TORQUE WRENCH

### HB-SERIES

### 5 ~ 340 Nm

The NovaTork HB torque spanner series can be set to the correct torque by the operator. With the flexibly adjustable head, it adapts immediately to different bolt sizes.

#### FEATURES

- Accuracy: +/-4% from 20-100% of capacity.
- Adjustable spanner head integrated.
- Alloy steel tube, strength and durable.
- Imperial secondary scale for reference.
- Alloy handle with cross grooves, non-slip, comfortable
- Three sizes of heads available:
  - 8" head for A/F 14~24 mm hexagon bolt;
  - 10" head for A/F 19~30 mm hexagon bolt;
  - 12" head for A/F 24~36 mm hexagon bolt.



#### HB Model

Type	Opening size mm	Torque Nm	Weight kg	Width mm	Length mm
<b>HB60KB</b>	14 ~ 24	5 ~ 60	1,13	60	425
<b>HB110K10</b>	19 ~ 30	10 ~ 110	1,3	70	490
<b>HB220K12</b>	24 ~ 36	20 ~ 220	1,55	112	536
<b>HB340K12</b>	24 ~ 36	60 ~ 340	1,75	112	600

## MINI TORQUE WRENCH

### GS-SERIES

1 ~ 40 Nm

NovaTork offers a complete range of click torque wrenches. These are intended for mounting bolted connections. The GS series are very compact and therefore very lightweight.

This series is available with a fixed ratchet head or a wide variety of insert tools.

The torque is accurately adjustable, whereby the setting ring cannot be twisted unintentionally.

#### FEATURES

- Accuracy:  $\pm 4\%$  in clockwise direction.
- Small sizes and light weight, and can be operated in confined spaces.
- Permanently stamped major and minor scales for precision torque values setting.
- Minor scale is 1/10 of increment of main scale
- Grooved non-slip grip fits comfortably in your hand.
- Various fittings for different applications:
  - GSMH model: Head holder for standard 9x12mm rectangular shank heads.



#### GSMH Model

Type	Insert tool mm	Torque Nm	Weight kg	Width mm	Length mm
<b>GSMH95S</b>	9 x 12	1 ~ 5	0,28	28	170
<b>GSMH915S</b>	9 x 12	3 ~ 25	0,31	28	194
<b>GSMH925S</b>	9 x 12	5 ~ 25	0,33	28	217
<b>GSMH940S</b>	9 x 12	8 ~ 40	1,2	28	244



#### GSM Model

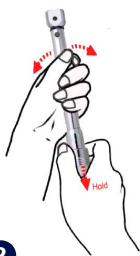
Type	Square Drive	Torque Nm	Weight kg	Width mm	Length mm
<b>GSM15S</b>	1/4"	1 ~ 5	0,30	28	183
<b>GSM115S</b>	1/4"	3 ~ 15	0,33	28	207
<b>GSM125S</b>	1/4"	5 ~ 25	0,35	28	230
<b>GSM240S</b>	3/8"	8 ~ 40	0,37	36	260

#### Torque Locking



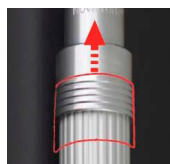
1

Pull and hold the locking ring



2

Rotate the tube to adjust the torque by the other hand



3

Release the locking ring after torque being set

#### Optional fittings OH, DH, QH



\* These types of fittings are available on request.



## PRESET TORQUE WRENCH PC-SERIES

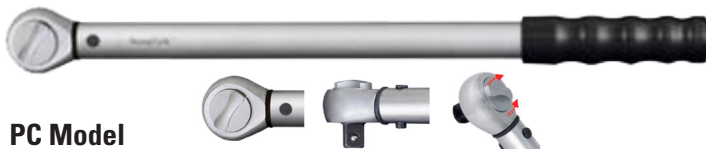
### 1 ~ 3000 Nm

NovaTork pre-set torque wrenches are intended for the assembly industry. Where an operator can work with a pre-set torque and is not allowed to adjust it. This prevents unintentional setting errors.

The torque wrenches have an extremely high and long repeat accuracy and are suitable for every application due to the large variety of insertion tools.

#### FEATURES

- Torque range: 1 ~ 340 Nm.
- Easy to adjust to desired torque.
- Operator cannot change set torque by accident or by mistake.
- +/-4% Accuracy in clockwise direction (20% to 100% max.Torque).
- Various fittings designed for different applications.



#### PC Model

The delicate gearing allows a stroke of at least 8 degrees. Can therefore also be used in compact spaces.

Type	Square Drive	Torque Nm	Weight kg	Width mm	Length mm
PC112	1/4"	2.5 ~ 12	0,45	38	184
PC120	1/4"	4 ~ 20	0,45	38	184
PC230	3/8"	6 ~ 30	0,5	38	184
PC260	3/8"	10 ~ 60	0,56	38	184
PC2125	3/8"	25 ~ 125	0,79	38	366
PC3200	1/2"	40 ~ 200	1,2	38	457
PC3340	1/2"	65 ~ 340	1,96	40	691
PC4650	3/4"	150 ~ 650	2,80	57	915
PC4800	3/4"	160 ~ 880	5,0	60	1030
PC41000	3/4"	200 ~ 1000	6,0	60	1260
PC51000	1"	200 ~ 1000	6,0	60	1260
PC51500	1"	300 ~ 1500	8,0	60	1610
PC52000	1"	400 ~ 2000	9,5	60	1910
PC53000	1"	600 ~ 3000	9,9	60	2010

Can be equipped with wireless OK signal transmitter DC-04WX



#### PCH Model

Head holder for standard 9x12mm or 14x18mm square insert tools.

Type	Insert tool mm	Torque Nm	Weight kg	Length mm
PCH95S	9 x 12	1 ~ 5	0,22	145
PCH910S	9 x 12	2 ~ 10	0,23	145
PCH915S	9 x 12	3 ~ 15	0,23	145
PCH920	9 x 12	4 ~ 20	0,25	155
PCH925	9 x 12	5 ~ 25	0,28	178
PCH935	9 x 12	7 ~ 35	0,32	205
PCH940S	9 x 12	8 ~ 40	0,28	233
PCH950	9 x 12	5 ~ 50	0,4	240
PCH985	9 x 12	15 ~ 85	0,51	310
PCH9120	9 x 12	25 ~ 120	0,6	355
PCH9180T1	9 x 12	40 ~ 180	0,7	600
PCH9180	9 x 12	40 ~ 180	0,7	400
PCH14200	14 x 18	40 ~ 200	0,85	424
PCH14300	14 x 18	60 ~ 300	1,3	688
PCH24800	24 x 32	160 ~ 800	4,8	1030

#### Optional fittings OH, DH, QH



\* These types of fittings are available on request.

# NovaTork®

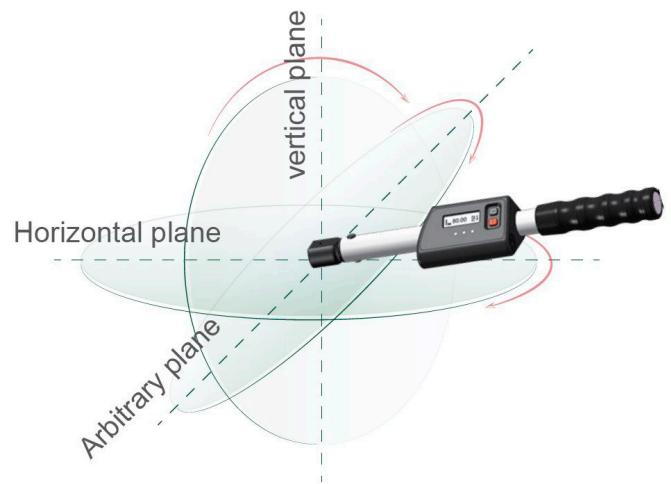
## WLAN MECHATRONIC PRESET TORQUE WRENCH WPEM-SERIES

4 ~ 300 Nm

NovaTork WPEM series of torque wrenches are electro mechanical (click) preset torque wrenches with WLAN, angle, storage functions. The wrench itself can be used independently.

Under the WLAN environment, the wrench and the centralized control centre can realize real-time communication.

24 wrenches can be controlled at the same time.



### WPEM Model

Type	Insert tool mm	Torque Nm	Weight kg	Width mm	Length mm
WPEMH920	9 x 12	4,0 ~ 20	0,55	24	248
WPEMH930	9 x 12	6,0 ~ 30	0,55	24	248
WPEMH960	9 x 12	10 ~ 60	0,66	24	296
WPEMH9100	9 x 12	20 ~ 100	0,76	24	345
WPEMH14200	14 x 18	40 ~ 200	0,99	32	448
WPEMH14300	14 x 18	50 ~ 300	1,28	32	580



# NovaTork®

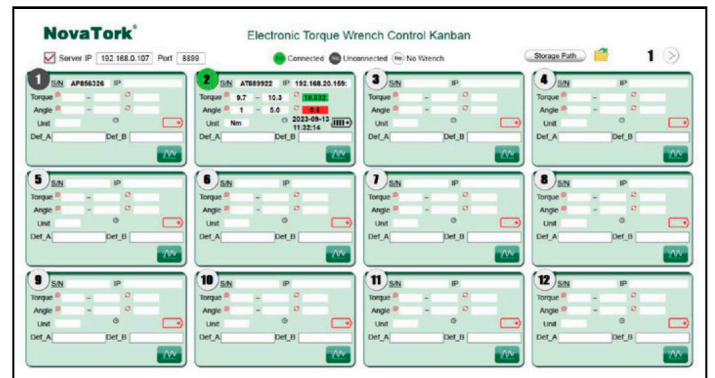
## WLAN MECHATRONIC PRESET TORQUE WRENCH WPEM-SERIES 4 ~ 300 Nm

### FEATURES

- Accuracy: Torque: CW $\pm$ 4% from 20% to 100% of capacity;  
Angle: ( $\pm$ 1% of reading) + ( $\pm$ 1° @ angular speed of 10°/s~180°/s) + ( $\pm$ 1° of test fixture)
- LCD screen display, convenient for real-time viewing. The wrench can be adjusted against the displayed torque value.
- Maintaining the Click audible alarm feature of the mechanical wrench.
- 4 Torque units are available: N.m, Ft.lb, In.lb, Kg.cm
- First peak value mode.
- Adjustable mechanism to set the torque value setting, and minimum angle value can be set in the system to prevent the operator from operating the same screw repeatedly.
- Peak value and judgement light status remain displayed after unloading.
- WLAN Server software can receive instant data from 24 wrenches working at the same time and record the information. Each screen can observe 12 wrenches.
- Through the USB Update software, you can set the: accuracy, angle value, etc. for judgment, and download them directly into the wrench.
- The data of operating the wrench can be automatically sent to the centralized control center and saved.
- The wrench also has its own memory, which can save 1000 groups of data. If there is no WiFi communication temporarily, the data will be automatically stored in the memory of the wrench and will be uploaded automatically after WLAN is restored. You can also upload the data manually via the USB upload software.



### Centralized Control Software:



### Optional fittings:





# NovaTork®





## CLICK TORQUE WRENCH

### STM-SERIES

20 ~ 2000 Nm

NovaTork offers a complete range of click torque wrenches. These are designed for mounting bolted connections. The STM series is of industrial quality and has a very high repeat accuracy.

This series is available with a fixed ratchet head or a wide variety of insert tools. The torque is accurately adjustable on a clearly readable scale. In addition, the blocking feature ensures that the torque cannot be twisted unintentionally.

#### FEATURES

- Unique window scale with fine increments.
- Accuracy is  $\pm 4\%$  of the reading value.
- Ergonomic, non-slip handle.
- Handgrip in engineering plastic, oil resistant and non-slip resistant, durable.
- Push/Pull end cap to secure the set torque value from accidental change.
- This wrench is longer than normal torque wrench, more efficiently while long time using.
- Various fittings for different applications:
  - STMH model: Head holder, for 9x12 or 14x18mm rectangular shank heads.
  - STMX model: Push-through ratchet head for clockwise and counter-clockwise operation.
  - STM model: Compact reversible ratchet head for clockwise and counter-clockwise operation.

#### Optional fittings OH, DH, QH



\* These types of fittings are available on request.



#### STMH Model

Type	Insert tool mm	Torque Nm	Weight kg	Width mm	Length mm
STMH9100	9 x 12	20 ~ 100	0,9	43	423
STMH9150	9 x 12	30 ~ 150	1,1	43	463
STMH14150	14 x 18	30 ~ 150	1,1	43	467
STMH14200	14 x 18	40 ~ 200	1,2	43	494
STMH14300	14 x 18	60 ~ 300	1,2	43	554
STMH14400	14 x 18	80 ~ 400	1,6	56	707



#### STMX Model

Type	Square Drive	Torque Nm	Weight kg	Width mm	Length mm
STMX3100	1/2"	20 ~ 100	1,1	48	438
STMX3200	1/2"	40 ~ 200	1,3	48	505
STMX3300	1/2"	60 ~ 300	1,4	48	565
STMX3400	1/2"	80 ~ 400	1,99	50	700
STMX41000	3/4"	200 ~ 1000	4,55	70	1210
STMX51500	1"	300 ~ 1500	6,5	90	1710
STMX52000	1"	400 ~ 2000	6,8	90	1943



#### STM Model

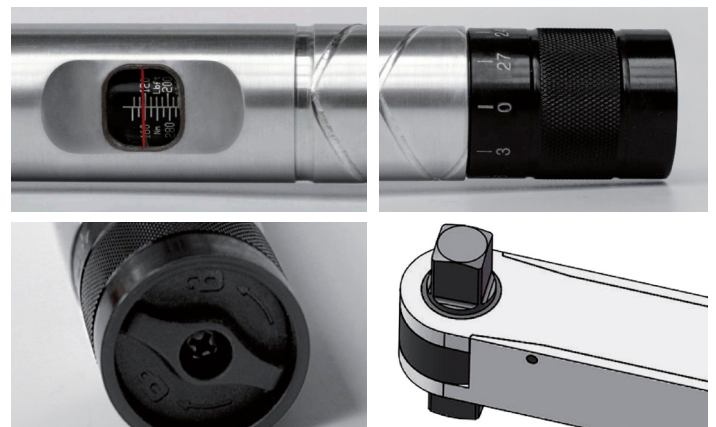
Type	Square Drive	Torque Nm	Weight kg	Width mm	Length mm
STM125	1/4"	5 ~ 25	0,82	30	321
STM250	3/8"	10 ~ 50	1	38	387
STM3100	1/2"	20 ~ 100	1,1	40	433
STM3200	1/2"	40 ~ 200	1,25	40	491
STM3300	1/2"	60 ~ 300	1,4	40	551
STM3340	1/2"	68 ~ 340	1,4	40	551
STM3400	1/2"	80 ~ 400	1,97	40	700
STM41000	3/4"	200 ~ 1000	4,2	60	1105
STM51500	1"	300 ~ 1500	6,5	90	1710

## ALUMINIUM TORQUE WRENCH AU-SERIES

100 ~ 2000 Nm

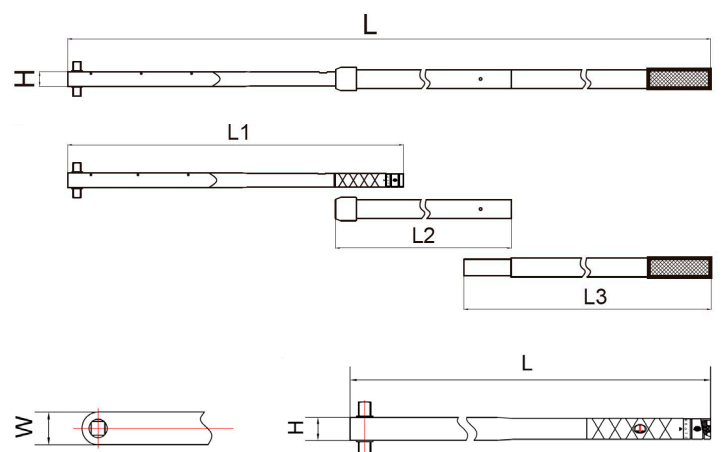
This torque wrench from NovaTork is made of high-quality aluminum and has a built-in ratchet head. This makes it very lightweight and durable, but above all very pleasant to use. Repositioning or a loose ratchet head is no longer necessary.

The solid construction makes it very suitable for higher tightening torques. The AUMR series has an option for an extended handle for ergonomic and safe working.



### FEATURES

- Accuracy: +/- 4% at 20% to 100% of capacity
- Clearly readable scale
- Scale division in Nm or Lbft
- Lightweight
- Blocking device prevents inadvertent shifting of the set torque
- Clearly readable decimated scale
- Built-in ratchet head for counterclockwise and clockwise use.
- AUM series measurements are not sensitive for the position of the hand during tightening.



### AU Model

Type	Square Drive	Torque Nm	Weight kg	L1 mm	L2 mm	L3 mm	Width (W) x height (H) mm	Length (L) mm
<b>AUMR4550</b>	3/4"	100 ~ 550	2,9	-	-	-	45 x 35	811
<b>AUMR4760</b>	3/4"	160 ~ 760	3,2	-	-	-	45 x 35	811
<b>AUMR41000</b>	3/4"	200 ~ 1000	5,6	811	754	-	45 x 35	1400
<b>AUMR51500</b>	1"	300 ~ 1500	9,8	930	930	-	60 x 40	1598
<b>AUMR52000</b>	1"	400 ~ 2000	12	930	930	930	60 x 40	2308

## DIAL TORQUE WRENCH

### DS-SERIES

2 ~ 2000 Nm

Unlike click wrenches, NovaTork measuring wrenches have been developed for checking bolted connections. By slowly tightening the wrench, the compression torque can be observed. The drag indicator shows the applied torque.

#### FEATURES

- Accuracy:  $\pm 3\%$ . ( $\pm 4\%$  accuracy for wrenches with capacities above 400N.m).
- Alloy steel structure, light weight and more durable.
- DSM-D models are two-way dial torque wrenches and can be operated in Clockwise or Counter-Clockwise direction.



#### DSM Model

Type	Square Drive	Torque Nm	Weight kg	Width mm	Length mm
<b>DSM220D</b>	3/8"	2 ~ 20	0,57	37	310
<b>DSM250D</b>	3/8"	5 ~ 50	1,16	37	400
<b>DSM3200D</b>	1/2"	20 ~ 200	1,05	37	550
<b>DSM41000D</b>	3/4"	100 ~ 1000	6,4	59	1192
<b>DSM52000D</b>	1"	400 ~ 2000	8,8	59	1620



Plastic guard for "anti-scratch" policy



Peak torque holding function with included memory needle



Metal guard protect dial mechanism

# NovaTork®

## ELECTRONIC TORQUE WRENCH EJ-SERIES

### 3 ~ 1000 Nm

This NovaTork electronic torque wrench is suitable for both industrial assembly purposes and checking bolted joints. The clear display has a Peak + Track mode. LED light signals and sound alert the operator that the target tightening torque has been reached.

The display zeroes itself after each bolted joint and the key switches off automatically after 2 minutes.

#### FEATURES

- Accuracy:  $\pm 2\%$ .
- Units: Lbft, Lbin, Nm, Kgm.
- Modes: Peak Torque mode, Track mode.
- Target torque can be set
- Led light and buzzer alarming when reaches target torque.
- Torque error percentage display function.
- Optional backlight, good for dark working condition.
- Automatic reset to zero.
- Battery level display.
- Handgrip in engineering plastic, oil resistant and non-slip resistant, durable.
- Automatically shuts off after 2 minutes of non use.
- LR03 AAA x 3 alkaline batteries.



#### EJM Model

Type	Square Drive	Torque Nm	Weight kg	Width mm	Length mm
EJM230	3/8"	3 ~ 30	0,9	38	427
EJM250	3/8"	10 ~ 50	0,93	38	452
EJM2100	3/8"	20 ~ 100	1,0	38	482
EJM3200	1/2"	20 ~ 200	1,12	40	522
EJM3300	1/2"	30 ~ 300	1,52	40	590
EJM4400	3/4"	40 ~ 400	3,3	57	795
EJM4600	3/4"	60 ~ 600	4,6	60	1050
EJM4800	3/4"	80 ~ 800	5,2	60	1250
EJM41000	3/4"	100 ~ 1000	5,2	60	1250



#### EJMH Model

Type	Insert tool mm	Torque Nm	Weight kg	Width mm	Length mm
EJMH950	9 x 12	10 ~ 50	0,87	24	423
EJMH9100	9 x 12	20 ~ 100	0,93	24	453
EJMH14200	14 x 18	20 ~ 200	1,08	32	506

#### Optional fittings OH, DH, QH



\* These types of fittings are available on request.



## ELECTRONIC ANGLE TORQUE WRENCH EA-SERIES

### 2 ~ 1000 Nm

NovaTork's digital torque wrenches are intended for mounting or checking bolted connections. The accurately adjustable torque can be clearly read on the display.

These torque wrenches are adjustable for torque, angular rotation or a combination of both. Thanks to the accurate gyroscope, the angular rotation can be measured to 1 degree.

For accurate measurement, the torque wrench has a Peak & Trace function. The highest value of the measurement is retained so that the twisting torque can be read off.

### FEATURES

- Accuracy:
  - Torque: CW±2%, CCW±3%.
  - Angle: ( ±1% of reading) + ( ±1° @ angular speed of 10°/s~180°/s) + ( ±1° of test fixture)
- Angle function:
  - High-precision gyroscope angle chip
  - Can preset the target angle value
  - Sound and light alarm function when reaching the target value
- Handgrip in engineering plastic, oil resistant and non-slip resistant, durable.
- Digital Display and functions
  - The reading is intuitive and clear, with high resolution
  - Torque error% display function
  - Angle difference display in angle mode
  - Backlight for dark working condition



### EAM Model

Type	Square Drive	Torque Nm	Weight kg	Width mm	Length mm
<b>EAM120</b>	1/4"	2 ~ 20	0,88	38	427
<b>EAM230</b>	3/8"	3 ~ 30	0,88	38	427
<b>EAM250</b>	3/8"	5 ~ 50	0,93	38	452
<b>EAM2100</b>	3/8"	10 ~ 100	1,0	38	482
<b>EAM3200</b>	1/2"	20 ~ 200	1,2	40	522
<b>EAM3300</b>	1/2"	30 ~ 300	1,27	40	590
<b>EAM4400</b>	3/4"	40 ~ 400	3,3	57	795
<b>EAM4600</b>	3/4"	60 ~ 600	4,6	60	1050
<b>EAM4800</b>	3/4"	80 ~ 800	5,2	60	1250
<b>EAM41000</b>	3/4"	100 ~ 1000	5,2	60	1250



### EAMH Model

Type	Insert tool mm	Torque Nm	Weight kg	Width mm	Length mm
<b>EAMH920</b>	9 x 12	2 ~ 20	0,77	24	377
<b>EAMH930</b>	9 x 12	3 ~ 30	0,82	24	399
<b>EAMH950</b>	9 x 12	5 ~ 50	0,85	24	417
<b>EAMH9100</b>	9 x 12	10 ~ 100	0,93	24	453
<b>EAMH14200</b>	14 x 18	20 ~ 200	1,05	32	493
<b>EAMH14300</b>	14 x 18	30 ~ 300	1,22	32	561

### Optional fittings OH, DH, QH



\* These types of fittings are available on request.

# NovaTork®

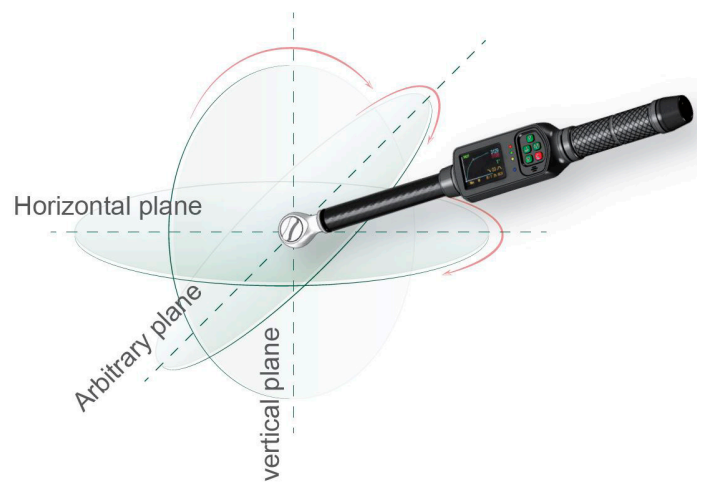
## WLAN ELECTRONIC TORQUE WRENCH WEM-B SERIES

6 ~ 340 Nm

The multifunctional torque wrench not only has all the functions of an electronic torque wrench, but also has angle and WLAN function. The wrench itself can be used independently.

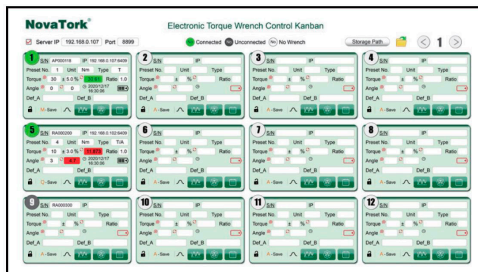
Under the WLAN environment, the wrench and the centralized control centre can realize real-time communication.

24 wrenches can be controlled at the same time.



### Full wrench control & data storage

12 Wrenches per page on the software



### WEMH-B Model

Rectangular Shank Head Holder Torque Wrench

Type	Insert tool mm	Torque Nm	Weight kg	Width mm	Length mm
WEMH960B	9 x 12	6~ 60	0,86	24	402
WEMH9100B	9 x 12	10 ~ 100	0,93	24	432
WEMH14200B	14 x 18	20 ~ 200	1,04	32	505
WEMH14300B	14 x 18	30 ~ 300	1,2	32	585
WEMH14340B	14 x 18	34 ~ 340	1,2	32	585



### WEM-B Model

Reversible Ratchet Head Torque Wrench

Type	Square Drive	Torque Nm	Weight kg	Width mm	Length mm
WEM260B	3/8"	6~ 60	0,99	38	430
WEM2100B	3/8"	10 ~ 100	1,05	38	460
WEM3200B	1/2"	20 ~ 200	1,2	40	526
WEM3300B	1/2"	30 ~ 300	1,35	40	606
WEM3340B	1/2"	34 ~ 340	1,35	40	606

### Optional fittings:



# NovaTork®

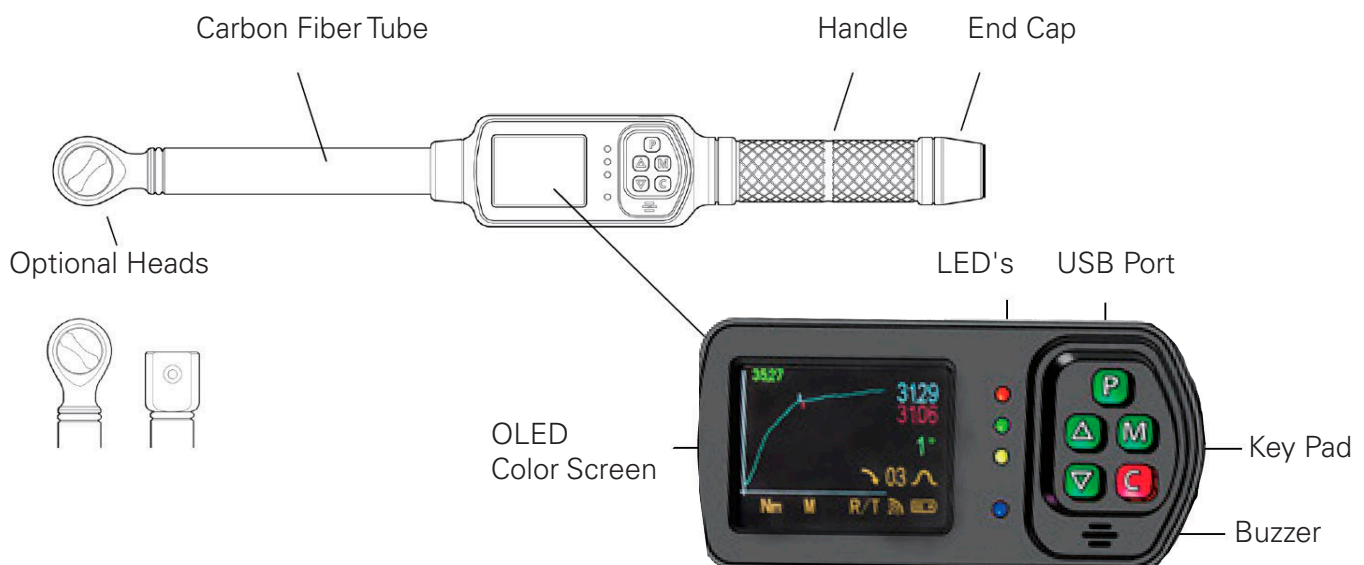
## WLAN ELECTRONIC TORQUE WRENCH WEM-B SERIES

### 6 ~ 340 Nm

#### FEATURES

- Accuracy: Torque: CW $\pm$ 1%, CCW $\pm$ 2% +1digit from 10% to 100% of capacity;  
Angle: ( $\pm$ 1% of reading) + ( $\pm$ 1° @ angular speed of 10°/s~180°/s) + ( $\pm$ 1° of test fixture)
- 2.4" OLED color screen display
- Menu operation, easy to set and use
- 7 Torque units are available: Nm, Lbin, Lbft, Kgm, Kgcm, cNm, Ozin
- Two modes: Peak and Track
- Preset group function: 50 sets of parameters can be preset (parameters include torque unit, target value, accuracy, mode, etc.).
- Data Storage: The data of operating the wrench can be automatically sent to the centralized control center and saved. The wrench also has its own memory, which can save 2000 groups of data. If there is no WLAN communication temporarily, the data will be automatically stored in the memory of the wrench and will be uploaded automatically after WLAN is restored.
- Angle function can be applied to the requirement of reaching a certain torque and then turning through a certain angle, or pure angle testing.
- Target values can be set, with five Test Types available.
  - Peak Torque test, target torque value can be set
  - Peak Angle test, target angle value can be set
  - Peak Torque+Angle test, can set target torque and angle values
  - Beta test function, which can measure the torque and angle of tightening a bolt
  - Residual torque function, which can test residual torque
- When the set torque or angle is reached, there're sound, light and handle vibration alarms.
- After one test is completed, there will be data waveform display.
- Application curves can be saved and viewed on the wrench.

#### WEM-B OLED



## TORQUE TESTER

### TES-SERIES

The NovaTork torque tester was developed to check torque wrenches regularly. On the production line or in the technical department, the torque can be accurately checked, so that possible expiration of the torque wrench is quickly detected.

The clear display has a Peak + Trace function. In addition, a target torque can also be set. Once the desired torque is reached, the operator receives an LED and acoustic signal.

#### FEATURES

- Accuracy: 1%.
- Settings: Nm, Kgcm, Lbft, Lbin.
- Backlight optional, good for low light conditions.
- Memory function: Store 1500 sets of data as required, each set include time, unit, and value.
- Micro-USB port for charging and uploading data to computer.
- Automatic shutdown display after 10 minutes of non-use.

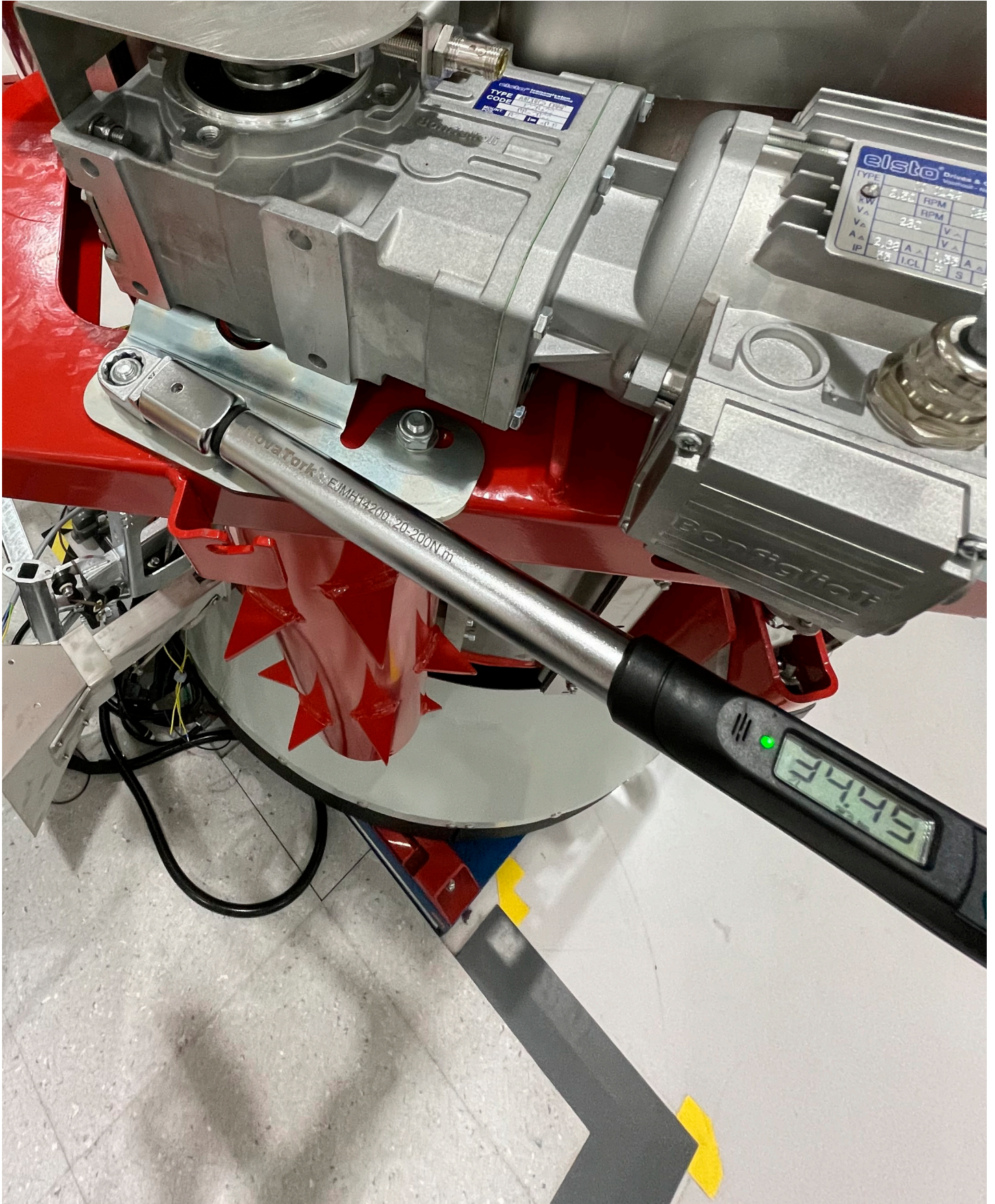


#### TES Model

Type	Square Drive	Torque Nm	Weight kg	Length mm	Width mm	Height mm
<b>TES112</b>	1/4"	1.2 ~ 12	2,2	135	136	85
<b>TES225</b>	3/8"	2.5 ~ 25	2,4	135	136	85
<b>TES240</b>	3/8"	4.0 ~ 40	2,6	135	136	85
<b>TES275</b>	3/8"	7.5 ~ 75	2,8	135	136	85
<b>TES3150</b>	1/2"	15 ~ 150	2,9	135	136	85
<b>TES3250</b>	1/2"	25 ~ 250	3,1	135	136	85
<b>TES3400</b>	1/2"	40 ~ 400	3,2	135	136	85
<b>TES4650</b>	3/4"	65 ~ 650	3,2	135	136	85
<b>TES41100</b>	3/4"	110 ~ 1100	3,4	135	136	85



# NovaTork®

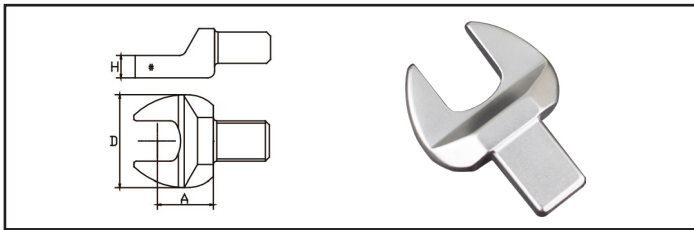




## INSERT TOOLS

### OH 9x12

Square drive open end, for rectangular shank head torque wrenches.



#### OH 9x12

Type	Insert tool mm	Weight kg	A mm	D mm	H mm	A/F mm
OH96	9 x 12	0,038	17,5	22	5,5	6
OH97	9 x 12	0,038	17,5	22	5,5	7
OH98	9 x 12	0,037	17,5	22	5,5	8
OH99	9 x 12	0,044	17,5	25	6	9
OH910	9 x 12	0,043	17,5	25	6	10
OH911	9 x 12	0,042	17,5	25	6	11
OH912	9 x 12	0,048	17,5	29	7	12
OH913	9 x 12	0,047	17,5	29	7	13
OH914	9 x 12	0,058	17,5	33	8	14
OH915	9 x 12	0,057	17,5	33	8	15
OH916	9 x 12	0,056	17,5	38	8	16
OH917	9 x 12	0,054	17,5	38	8	17
OH918	9 x 12	0,080	25	43	8	18
OH919	9 x 12	0,075	25	43	8	19
OH920	9 x 12	0,090	25	48	8	20
OH921	9 x 12	0,100	25	48	8	21
OH922	9 x 12	0,095	25	48	8	22
OH923	9 x 12	0,100	25	52	8	23
OH924	9 x 12	0,110	25	52	8	24
OH925	9 x 12	0,110	30	57	8	25
OH926	9 x 12	0,110	30	57	8	26
OH927	9 x 12	0,140	30	57	8	27

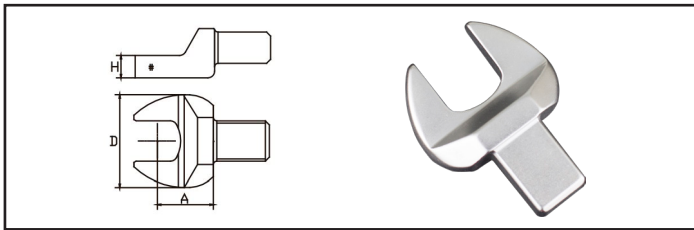
#### OH 9x12 (Continued)

Type	Insert tool mm	Weight kg	A mm	D mm	H mm	A/F mm
OH928	9 x 12	0,142	30	57	8	28
OH929	9 x 12	0,142	30	57	8	29
OH930	9 x 12	0,145	35	66	8	30
OH931	9 x 12	0,145	35	66	8	31
OH932	9 x 12	0,145	35	66	8	32
OH933	9 x 12	0,145	40	68	8	33
OH934	9 x 12	0,145	40	68	8	34
OH935	9 x 12	0,145	40	68	8	35
OH936	9 x 12	0,145	40	68	8	36
OH937	9 x 12	0,145	40	68	8	37
OH938	9 x 12	0,145	40	68	8	38
OH941	9 x 12	0,145	50	84	8	41
OH945	9 x 12	0,145	50	90	8	45
OH946	9 x 12	0,165	50	90	8	46
OH949	9 x 12	0,175	55	100	8	49
OH950	9 x 12	0,175	55	100	8	50
OH952	9 x 12	0,175	55	100	8	52
OH955	9 x 12	0,175	55	100	8	55
OH960	9 x 12	0,215	60	110	8	60
OH965	9 x 12	0,225	65	117	8	65
OH967	9 x 12	0,225	65	117	8	67
OH980	9 x 12	0,300	90	165	8	80

## INSERT TOOLS

### OH 14x18

Square drive open end, for rectangular shank head torque wrenches



#### OH 14x18

Type	Insert tool mm	Weight kg	A mm	D mm	H mm	A/F mm
OH148	14 x 18	0,120	25	30	7	8
OH149	14 x 18	0,118	25	30	7	9
OH1410	14 x 18	0,116	25	30	7	10
OH1411	14 x 18	0,116	25	30	7	11
OH1412	14 x 18	0,112	25	30	7	12
OH1413	14 x 18	0,010	25	32	8	13
OH1414	14 x 18	0,116	25	32	8	14
OH1415	14 x 18	0,115	25	32	8	15
OH1416	14 x 18	0,128	25	38	9	16
OH1417	14 x 18	0,127	25	38	9	17
OH1418	14 x 18	0,138	25	42	10	18
OH1419	14 x 18	0,137	25	41	10	19
OH1420	14 x 18	0,145	25	48	12	20
OH1421	14 x 18	0,158	25	48	12	21
OH1422	14 x 18	0,155	25	48	12	22
OH1423	14 x 18	0,156	25	52	13	23
OH1424	14 x 18	0,195	25	51,5	13	24
OH1425	14 x 18	0,163	25	52	13	25
OH1426	14 x 18	0,163	30	57	14	26
OH1427	14 x 18	0,230	30	57,5	14	27
OH1428	14 x 18	0,255	30	57	14	28
OH1429	14 x 18	0,255	30	57	14	29
OH1430	14 x 18	0,255	35	65	14	30
OH1432	14 x 18	0,255	35	65	14	32
OH1433	14 x 18	0,360	40	68	14	33
OH1434	14 x 18	0,360	40	68	14	34

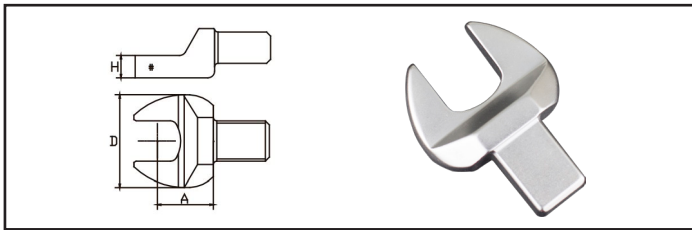
#### OH 14x18 (Continued)

Type	Insert tool mm	Weight kg	A mm	D mm	H mm	A/F mm
OH1435	14 x 18	0,365	40	68	14	35
OH1436	14 x 18	0,365	40	68	14	36
OH1437	14 x 18	0,440	40	68	14	37
OH1438	14 x 18	0,440	40	68	14	38
OH1439	14 x 18	0,435	50	83	14	39
OH1440	14 x 18	0,430	50	83	14	40
OH1441	14 x 18	0,430	50	83	14	41
OH1442	14 x 18	0,430	50	83	14	42
OH1443	14 x 18	0,480	50	90	14	43
OH1444	14 x 18	0,550	50	90	14	44
OH1445	14 x 18	0,600	50	90	14	45
OH1446	14 x 18	0,595	50	90	14	46
OH1448	14 x 18	0,595	55	100	14	48
OH1449	14 x 18	0,610	55	100	14	49
OH1450	14 x 18	0,610	55	100	14	50
OH1452	14 x 18	0,600	55	100	14	52
OH1455	14 x 18	0,585	55	100	14	55
OH1457	14 x 18	0,650	60	110	14	57
OH1460	14 x 18	0,650	60	110	14	60
OH1465	14 x 18	0,680	70	130	14	65
OH1470	14 x 18	0,700	70	130	14	70
OH1472	14 x 18	0,690	70	130	14	72
OH1475	14 x 18	0,720	70	130	14	75
OH1480	14 x 18	0,750	80	156	14	80
OH1490	14 x 18	0,750	80	156	14	90

## INSERT TOOLS

### OH 24x32, 27x36

Square drive open end, for rectangular shank head torque wrenches



#### OH 24x32

Type	Insert tool mm	Weight kg	A mm	D mm	H mm	A/F mm
OH2419	24 x 32	0,65	35	50	25	19
OH2420	24 x 32	0,68	35	61	25	20
OH2422	24 x 32	0,70	35	61	25	22
OH2424	24 x 32	0,715	35	61	25	24
OH2427	24 x 32	0,718	35	66,5	25	27
OH2428	24 x 32	0,719	35	66,5	25	28
OH2430	24 x 32	0,720	35	68	25	30
OH2432	24 x 32	0,725	35	68	25	32
OH2434	24 x 32	0,73	40	73,5	25	34
OH2436	24 x 32	0,732	40	73,5	25	36
OH2438	24 x 32	0,809	40	73,5	25	38
OH2441	24 x 32	0,925	50	86	25	41
OH2445	24 x 32	1,00	50	92	25	45
OH2446	24 x 32	1,00	50	92	25	46
OH2450	24 x 32	1,150	55	104	25	50
OH2455	24 x 32	1,30	55	104	25	55
OH2457	24 x 32	1,33	60	114	25	57
OH2460	24 x 32	1,33	60	114	25	60
OH2462	24 x 32	1,33	60	114	25	62
OH2465	24 x 32	1,337	70	134	25	65
OH2467	24 x 32	1,415	70	134	25	67
OH2468	24 x 32	1,415	70	134	25	68
OH2470	24 x 32	1,620	70	134	25	70
OH2475	24 x 32	1,650	70	134	25	75
OH2480	24 x 32	1,650	80	155	25	80
OH2485	24 x 32	1,70	85	160	25	85

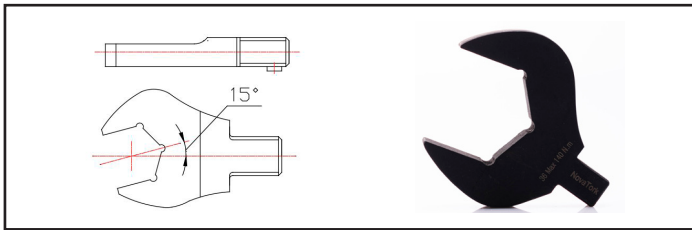
#### OH 24x32 (Continued), 27x36

Type	Insert tool mm	Weight kg	A mm	D mm	H mm	A/F mm
OH2495	24 x 32	1,750	90	170	25	95
OH2727	27 x 36	1,250	50	78,5	28	27
OH2730	27 x 36	1,295	50	85	28	30
OH2732	27 x 36	1,295	50	85	28	32
OH2734	27 x 36	1,330	50	88	28	34
OH2736	27 x 36	1,335	50	88	28	36
OH2738	27 x 36	1,338	50	90	28	38
OH2741	27 x 36	1,440	50	92	28	41
OH2745	27 x 36	1,440	50	98	28	45
OH2746	27 x 36	1,440	50	98	28	46
OH2750	27 x 36	1,450	55	118	28	50
OH2755	27 x 36	1,455	55	118	28	55
OH2760	27 x 36	1,460	60	130	28	60
OH2765	27 x 36	1,462	65	135	28	65
OH2770	27 x 36	1,465	70	142	28	70
OH2775	27 x 36	1,780	75	148	28	75
OH2780	27 x 36	2,60	80	158	28	80
OH2785	27 x 36	2,85	85	164	28	85
OH2790	27 x 36	2,90	90	176	28	90
OH2795	27 x 36	3,00	95	180	28	95
OH27100	27 x 36	3,15	100	195	28	100

## INSERT TOOLS

### OH\_A15-SERIES

Open End Spanner at 15 degree angle for Rectangular Shank Head Torque Wrench



#### OH\_A15 Series

Type	Insert tool mm	Weight kg	A mm	D mm	H mm	A/F mm
OH910A15	9 x 12	0,070	17,5	28	9	10
OH911A15	9 x 12	0,070	17,5	28	9	11
OH913A15	9 x 12	0,070	17,5	30	9	13
OH914A15	9 x 12	0,073	17,5	30	9	14
OH915A15	9 x 12	0,073	17,5	30	9	15
OH916A15	9 x 12	0,073	17,5	33	9	16
OH917A15	9 x 12	0,080	30	33	7	17
OH919A15	9 x 12	0,080	30	36	7	19
OH920A15	9 x 12	0,080	30	44	9	20
OH921A15	9 x 12	0,084	30	44	9	21
OH922A15	9 x 12	0,084	30	42	8	22

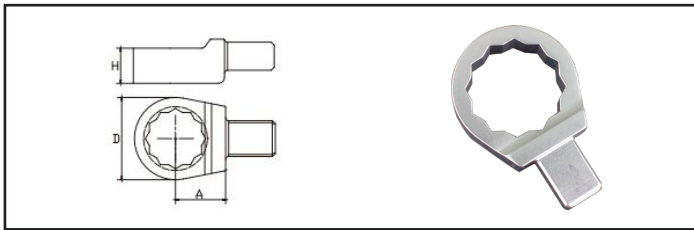
#### OH\_A15 Series (Continued)

Type	Insert tool mm	Weight kg	A mm	D mm	H mm	A/F mm
OH924A15	9 x 12	0,084	30	44	9	24
OH925A15	9 x 12	0,085	30	46	11	25
OH926A15	9 x 12	0,086	30	50	11	26
OH927A15	9 x 12	0,086	30	50	11	27
OH928A15	9 x 12	0,086	30	54	11	28
OH930A15	9 x 12	0,091	35	54	11	30
OH932A15	9 x 12	0,091	35	60	11	32
OH936A15	9 x 12	0,091	40	65	13	36
OH941A15	9 x 12	0,108	50	70	11	41
OH950A15	9 x 12	0,108	55	87	11	50

## INSERT TOOLS

### QH-SERIES

Box End Spanners for Rectangular  
Shank Head Torque Wrench



#### QH Series

Type	Insert tool mm	Weight kg	A mm	D mm	H mm	A/F mm
QH910	9 x 12	0,048	17,5	22	9	10
QH911	9 x 12	0,047	17,5	22	9	11
QH912	9 x 12	0,054	17,5	22	12	12
QH913	9 x 12	0,054	17,5	22	12	13
QH914	9 x 12	0,052	17,5	23	12	14
QH915	9 x 12	0,054	17,5	25	12	15
QH916	9 x 12	0,056	17,5	28	13	16
QH917	9 x 12	0,055	17,5	28	13	17
QH918	9 x 12	0,058	17,5	29	13	18
QH919	9 x 12	0,057	17,5	31	13	19
QH920	9 x 12	0,068	17,5	33	13	20
QH921	9 x 12	0,068	17,5	34	13	21
QH922	9 x 12	0,073	17,5	35	13	22
QH924	9 x 12	0,080	25	37	13	24
QH927	9 x 12	0,080	25	42	13	27
QH930	9 x 12	0,085	25	46	13	30
QH932	9 x 12	0,085	25	48	13	32
QH936	9 x 12	0,090	30	50	13	36
QH1406	14 x 18	0,095	25	32	11	6
QH1407	14 x 18	0,095	25	32	11	7
QH1408	14 x 18	0,095	25	32	11	8
QH1409	14 x 18	0,095	25	32	11	9
QH1410	14 x 18	0,095	25	32	11	10
QH1411	14 x 18	0,115	25	32	11	11
QH1412	14 x 18	0,125	25	32	11	12
QH1413	14 x 18	0,135	25	32	11	13
QH1414	14 x 18	0,135	25	32	11	14
QH1415	14 x 18	0,130	25	32	11	15

#### QH Series (Continued)

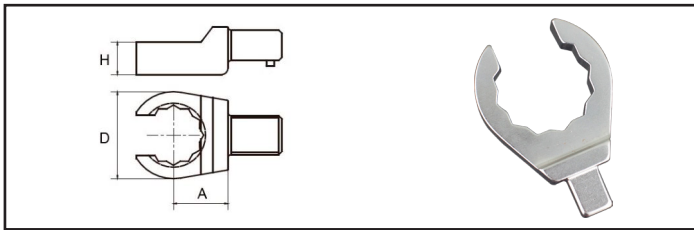
Type	Insert tool mm	Weight kg	A mm	D mm	H mm	A/F mm
QH1416	14 x 18	0,130	25	32	12	16
QH1417	14 x 18	0,130	25	32	12	17
QH1418	14 x 18	0,125	25	32	12	18
QH1419	14 x 18	0,125	25	32	12	19
QH1420	14 x 18	0,155	25	38,5	15	20
QH1421	14 x 18	0,155	25	38,5	15	21
QH1422	14 x 18	0,155	25	38,5	15	22
QH1430	14 x 18	0,165	30	45	17,5	30
QH1436	14 x 18	0,196	30	53	19	36
QH1470	14 x 18	0,270	55	96	19	70
QH2419	24 x 32	0,627	35	46	25	19
QH2430	24 x 32	0,755	35	67	25	30
QH2432	24 x 32	0,755	35	69	25	32
QH2434	24 x 32	0,790	40	71	25	34
QH2436	24 x 32	0,830	40	73,5	25	36
QH2438	24 x 32	0,922	45	80	25	38
QH2441	24 x 32	0,980	50	83	25	41
QH2446	24 x 32	0,970	50	92	25	46
QH2741	27 x 35	1,265	50	76	28	41
QH2746	27 x 35	1,270	50	82	28	46



## INSERT TOOLS

### QOH-SERIES

Box End Spanners for Rectangular  
Shank Head Torque Wrench



#### QOH Series

Type	Insert tool mm	Weight kg	A mm	D mm	H mm	Opening mm	A/F mm
QOH96	9 x 12	0,06	17,5	22	12	4,3	6
QOH97	9 x 12	0,06	17,5	22	12	5,3	7
QOH98	9 x 12	0,063	17,5	22	12	6	8
QOH99	9 x 12	0,063	17,5	22	12	6,5	9
QOH910	9 x 12	0,063	17,5	22	12	7,1	10
QOH911	9 x 12	0,063	17,5	22	12	8,6	11
QOH912	9 x 12	0,061	17,5	24	12	9	13
QOH913	9 x 12	0,063	17,5	25	12	10	13
QOH914	9 x 12	0,062	17,5	27	12	11	14
QOH915	9 x 12	0,069	17,5	28	13	12	15
QOH916	9 x 12	0,069	17,5	30	13	13	16
QOH917	9 x 12	0,068	17,5	31,5	13	14	17
QOH918	9 x 12	0,077	25	33	13	14,8	18
QOH919	9 x 12	0,082	25	34,5	13	15,8	19
QOH921	9 x 12	0,092	25	37	13	16,2	21
QOH922	9 x 12	0,095	25	37	13	17	22
QOH924	9 x 12	0,097	25	39	13	18	24
QOH927	9 x 12	0,105	30	44	13	21	27
QOH930	9 x 12	0,115	35	48	13	22	30
QOH932	9 x 12	0,120	35	51	13	24	32
QOH1413	14 x 18	0,135	25	32	13	10	13
QOH1414	14 x 18	0,140	25	32	13	11	14
QOH1415	14 x 18	0,145	25	32	13	11,5	15
QOH1416	14 x 18	0,145	25	32	13	13	16
QOH1417	14 x 18	0,145	25	32	13	14	17
QOH1418	14 x 18	0,150	25	33	15	14,8	18
QOH1419	14 x 18	0,150	25	34,5	15	15,8	19
QOH1422	14 x 18	0,155	25	38	15	17	22

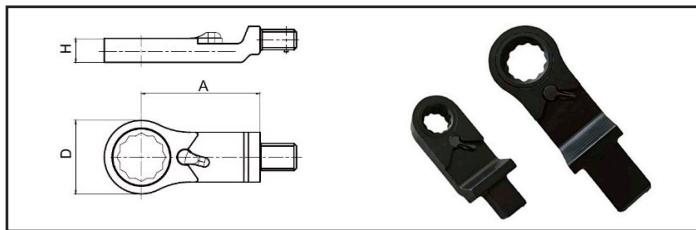
#### QOH Series (Continued)

Type	Insert tool mm	Weight kg	A mm	D mm	H mm	Opening mm	A/F mm
QOH1424	14 x 18	0,155	25	40	15	18,5	24
QOH1427	14 x 18	0,155	30	45	15	20	27
QOH1430	14 x 18	0,155	35	48	18	22	30
QOH1432	14 x 18	0,155	35	52	18	24	32
QOH1434	14 x 18	0,160	40	55	19	25	34
QOH1436	14 x 18	0,165	40	58	19	27	36
QOH1438	14 x 18	0,175	45	61	19	28	38
QOH1441	14 x 18	0,180	50	65	19	30	41
QOH1446	14 x 18	0,190	50	71	19	31	46
QOH1460	14 x 18	0,210	60	91	19	41	60
QOH2419	24 x 32	0,627	35	46	19	15,8	19
QOH2430	24 x 32	0,755	35	67	25	22	30
QOH2432	24 x 32	0,755	35	69	25	24	32
QOH2434	24 x 32	0,790	40	71	25	25	34
QOH2436	24 x 32	0,830	40	73,5	25	27	36
QOH2438	24 x 32	0,922	45	80	25	28	38
QOH2441	27 x 36	0,980	50	83	25	30	41
QOH2446	27 x 36	0,970	50	92	25	32	46

## INSERT TOOLS

### BQH-SERIES / DH-SERIES

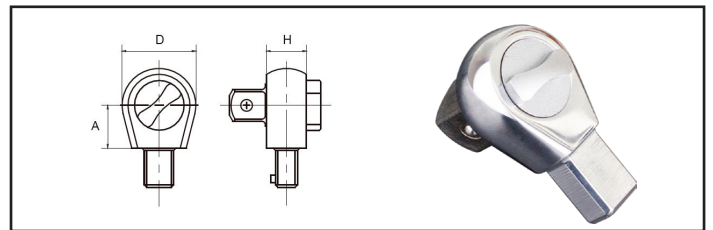
Ratchet head for rectangular shank head torque wrenches. Bi-directional internally geared on 72 teeth for very limited access tightenings.



#### BQH Series

Type	Insert tool mm	Torque Nm	Weight kg	A mm	D mm	H mm	A/F mm
<b>BQH98S</b>	9 x 12	34 Max	0,09	36	20	7,5	8
<b>BQH99S</b>	9 x 12	45 Max	0,095	40	20	7,5	9
<b>BQH910S</b>	9 x 12	58 Max	0,100	42	22	7,6	10
<b>BQH911S</b>	9 x 12	72 Max	0,103	42	24	8,6	11
<b>BQH912S</b>	9 x 12	89 Max	0,108	42	25	9,1	12
<b>BQH913S</b>	9 x 12	100 Max	0,110	42	26	9,4	13
<b>BQH914S</b>	9 x 12	125 Max	0,110	42	28	9,6	14
<b>BQH915S</b>	9 x 12	145 Max	0,110	45	28	10,1	15
<b>BQH916S</b>	9 x 12	160 Max	0,110	45	29,5	10,6	16
<b>BQH917S</b>	9 x 12	160 Max	0,112	52	32,5	10,6	17
<b>BQH918S</b>	9 x 12	160 Max	0,115	52	32,5	11,1	18
<b>BQH919S</b>	9 x 12	160 Max	0,115	52	35,5	11,5	19
<b>BQH920S</b>	9 x 12	160 Max	0,116	52	35,5	12,7	20
<b>BQH921S</b>	9 x 12	160 Max	0,116	52	42	13,8	21
<b>BQH922S</b>	9 x 12	160 Max	0,116	52	42	13,8	22

Ratchet Head for Rectangular Shank Head Torque Wrench



#### DH Series

Type	Insert tool mm	Square Drive	Weight kg	A mm	D mm	H mm
<b>DH9120</b>	9 x 12	1/4"	0,090	17,5	30	16,2
<b>DH9125</b>	9 x 12	1/4"	0,135	17,5	38	21
<b>DH92160</b>	9 x 12	3/8"	0,160	17,5	38	21
<b>DH93160</b>	9 x 12	1/2"	1,160	17,5	38	21
<b>DH143420</b>	14 x 18	1/2"	0,280	25	40	21
<b>DH144420</b>	14 x 18	3/4"	0,305	25	40	21
<b>DH2441200</b>	24 x 32	3/4"	1,04	35	60	32
<b>DH2451200</b>	24 x 32	1"	1,140	35	60	32
<b>DH2753000</b>	27 x 36	1"	1,720	50	72	42

# NovaTork®



[www.rami-yokota.com](http://www.rami-yokota.com)

Scan the QR code for NovaTork's product page on our website.